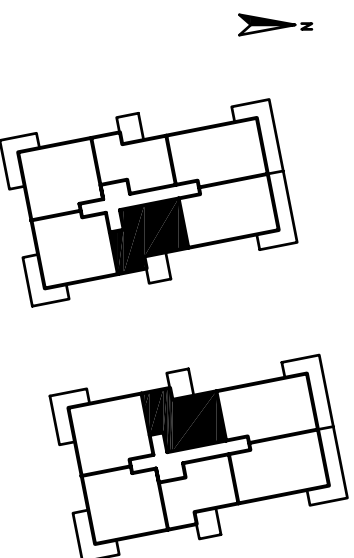


Strömbacka strand, Piteå




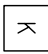


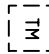
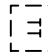

2 rum & kök ca 59 m²



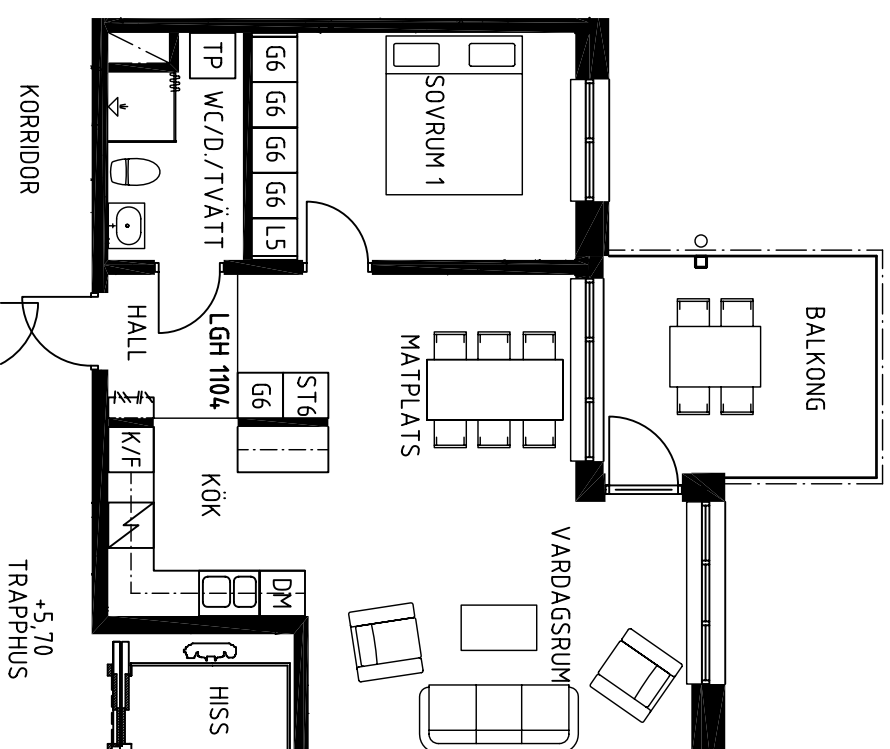
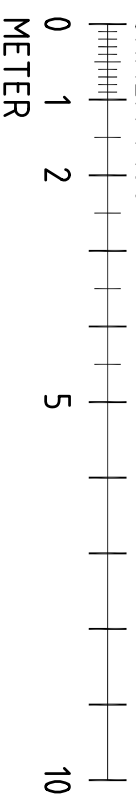
BDB FASTIGHETER



FÖRKLARINGAR

-  G Garderoab
-  L Linneskåp
-  ST Strådsråp
-  K Kylskåp
-  F Frysskåp
-  DM Plats för diskmaskin
-  TM Plats för tvåttmaskin
-  TT Plats för torktumlare
-  Plats för badkar

SKALA 1:100



Lägenhet nr:

- | | |
|--------|--------|
| A-1104 | B-1104 |
| A-1204 | B-1204 |
| A-1304 | B-1304 |
| A-1404 | B-1404 |

OBS! Lägenhetstypen förekommer spegelvänd